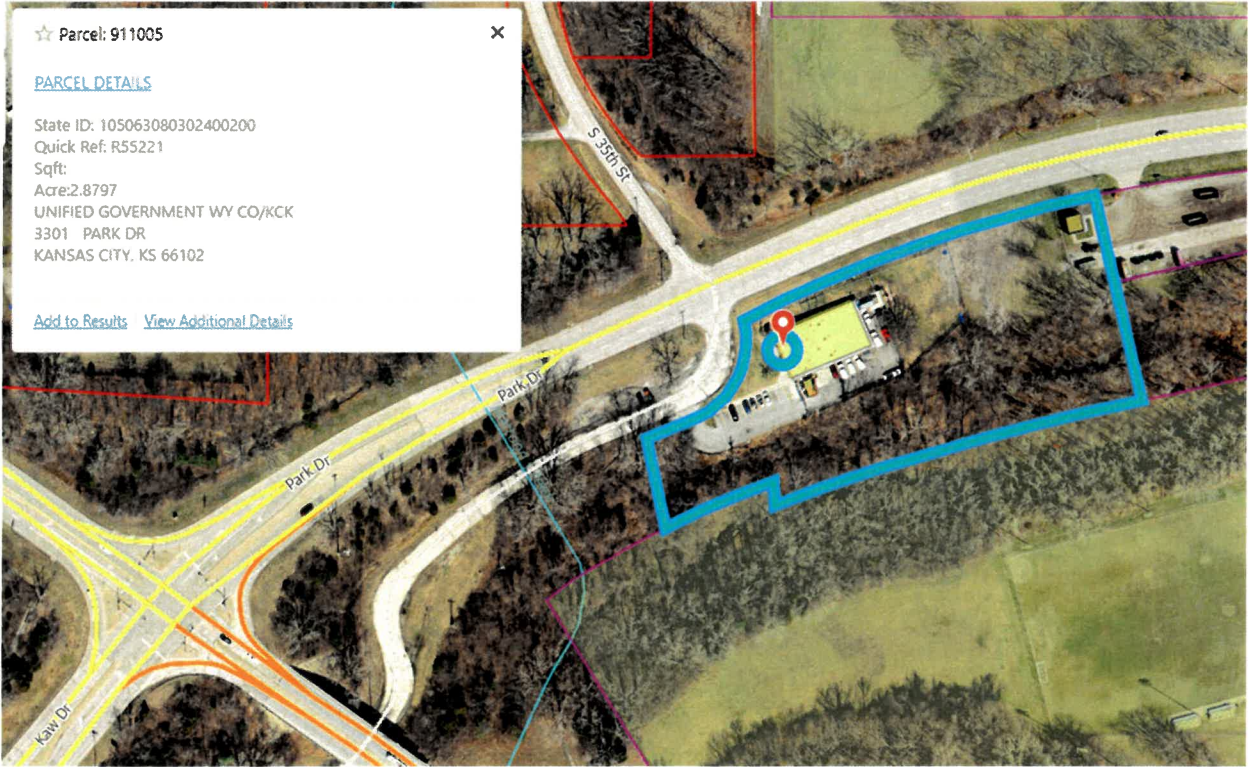


FLEET CENTER
5033 STATE AVE.



ANIMAL CONTROL

3301 PARK DRIVE



RECYCLING CENTER

3241 PARK DR.



FIRE STATION # 17

2416 S. 51ST ST.



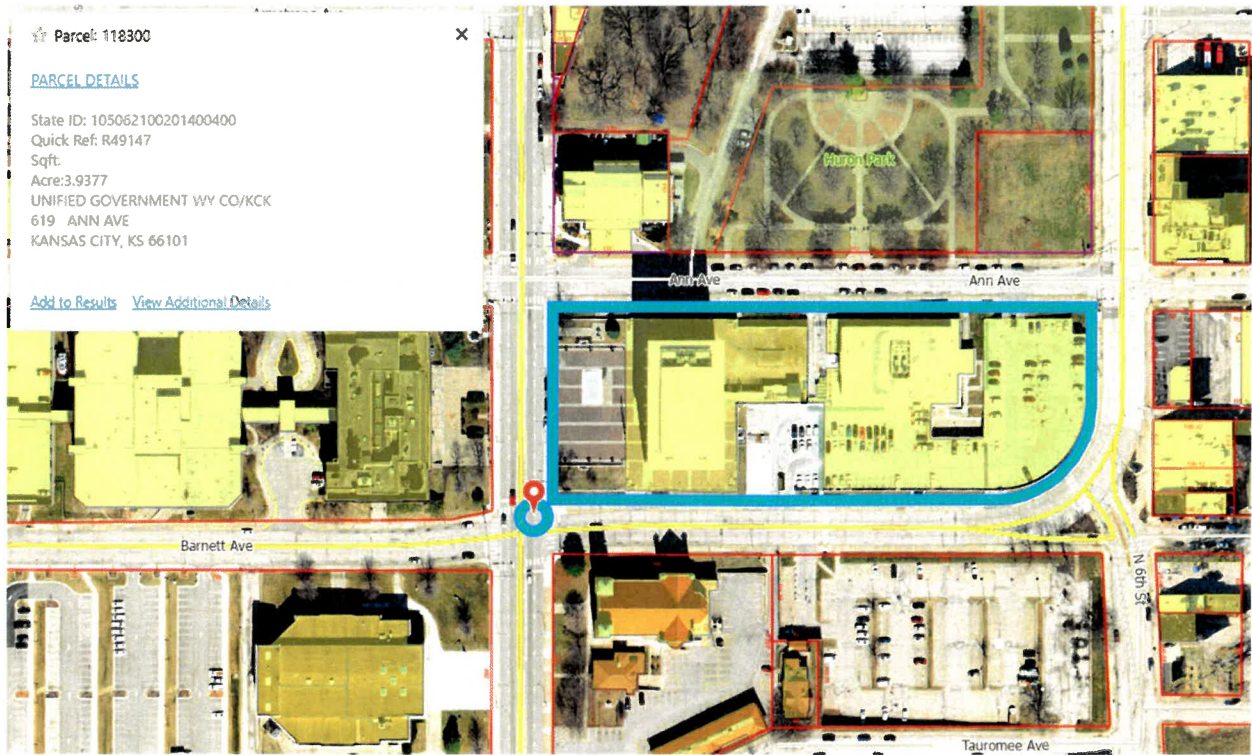
FIRE/POLICE STATION

1011 N. 80TH TERR.



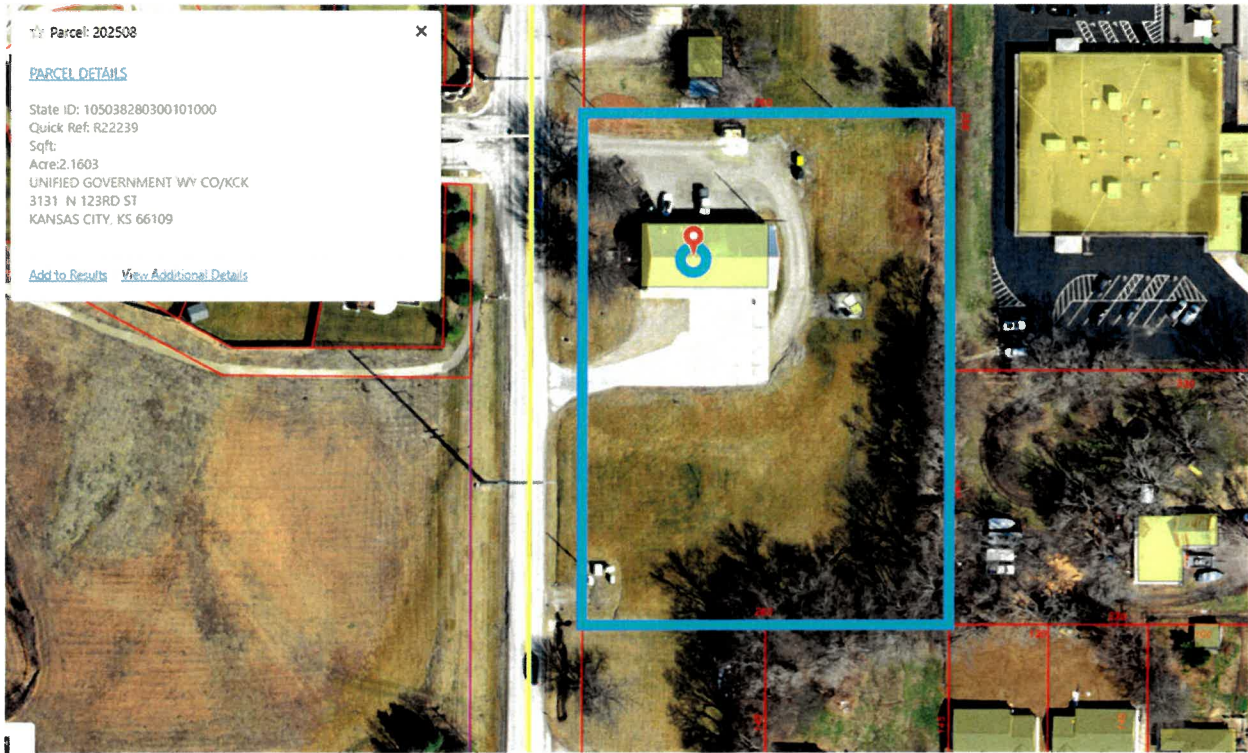
MEMORIAL HALL (Mow inside the yellow outlined area)

600 N. 7TH ST.



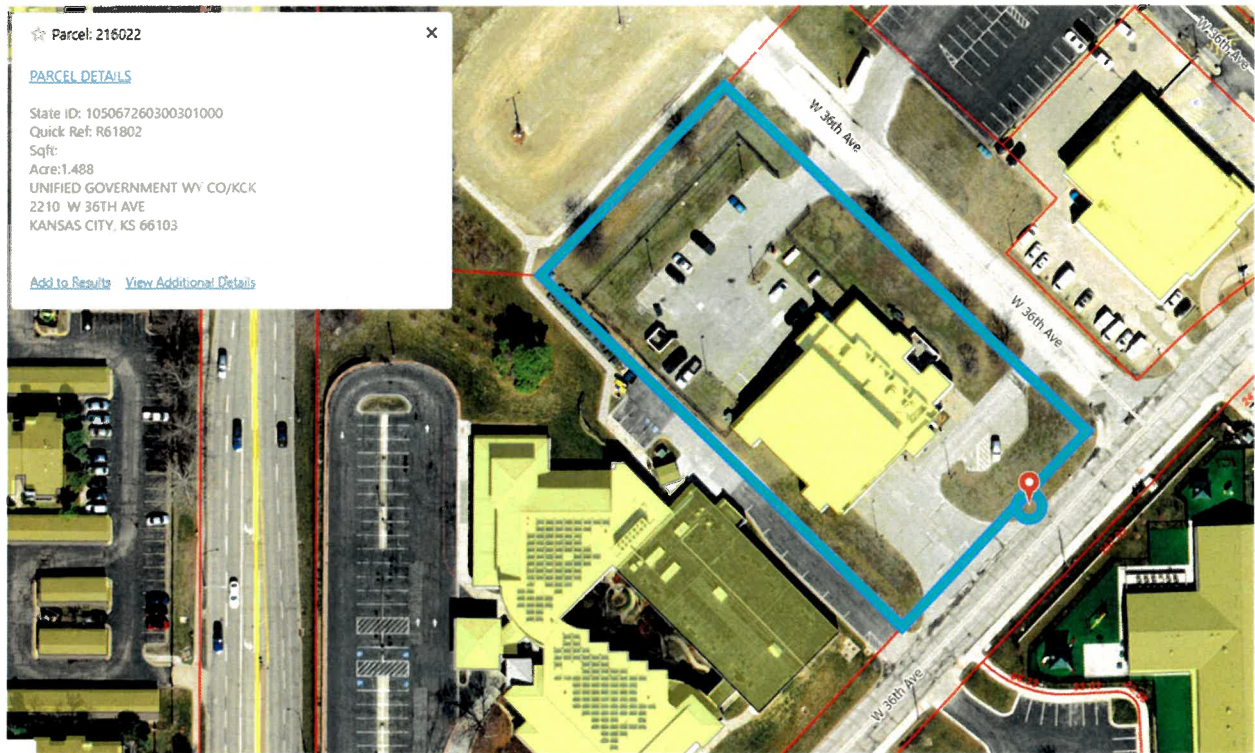
CITY HALL/HEALTH DEPARTMENT/PARKING LOT E

701 N. 7TH ST.



FIRE STATION # 8

3131 N. 123RD ST.



FIRE STATION # 10

2210 W. 36TH ST.



VACANT LOT

610/620 MINNESOTA AVE. (Mow inside the yellow outlined area)



MAIN COURTHOUSE/JUSTICE COMPLEX/PARKING LOT D

710 N. 7TH ST.



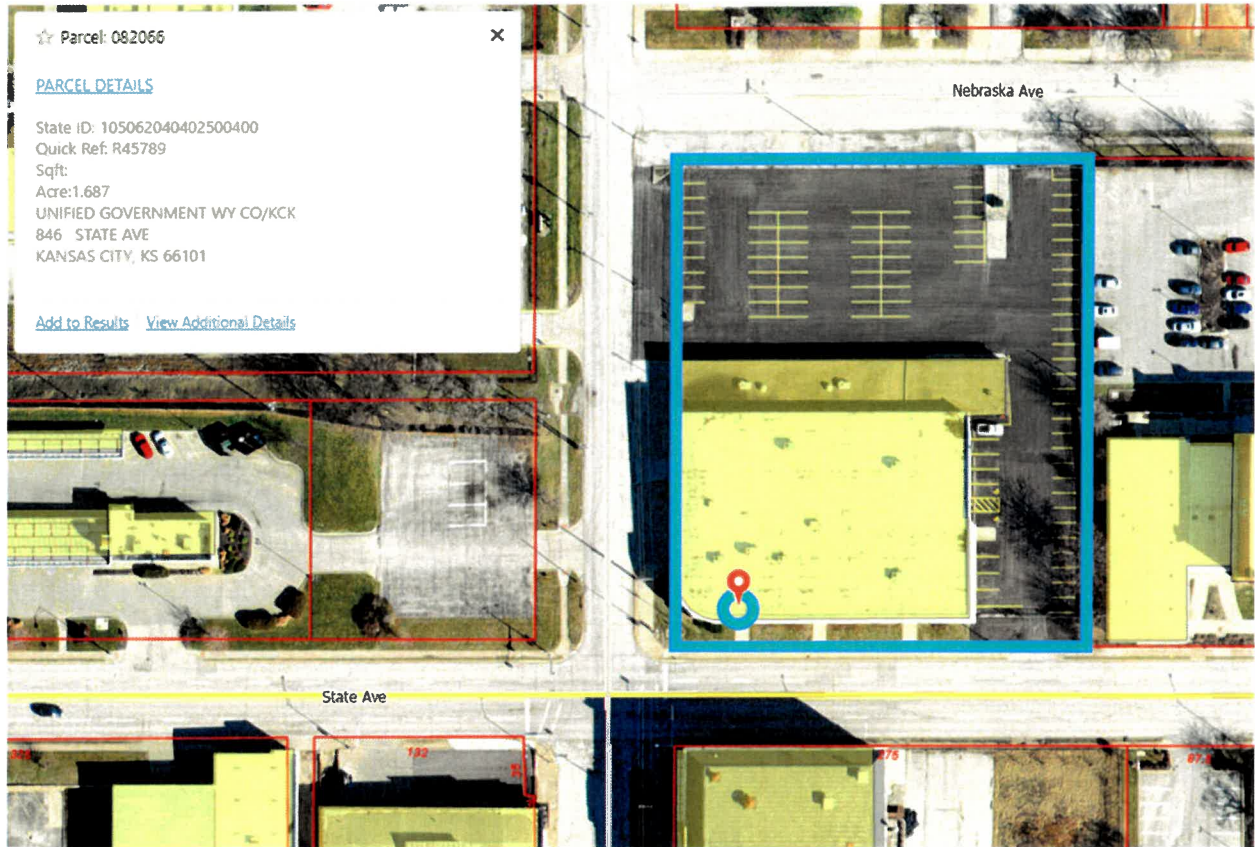
CORRECTIONAL COURT (Mow inside the yellow outlined area)

812 N. 7TH ST.



WILLA GILL CENTER (Mow area between 6th and 7th St.)

645 NEBRASKA AVE.



ELECTION OFFICE

850 STATE AVE.

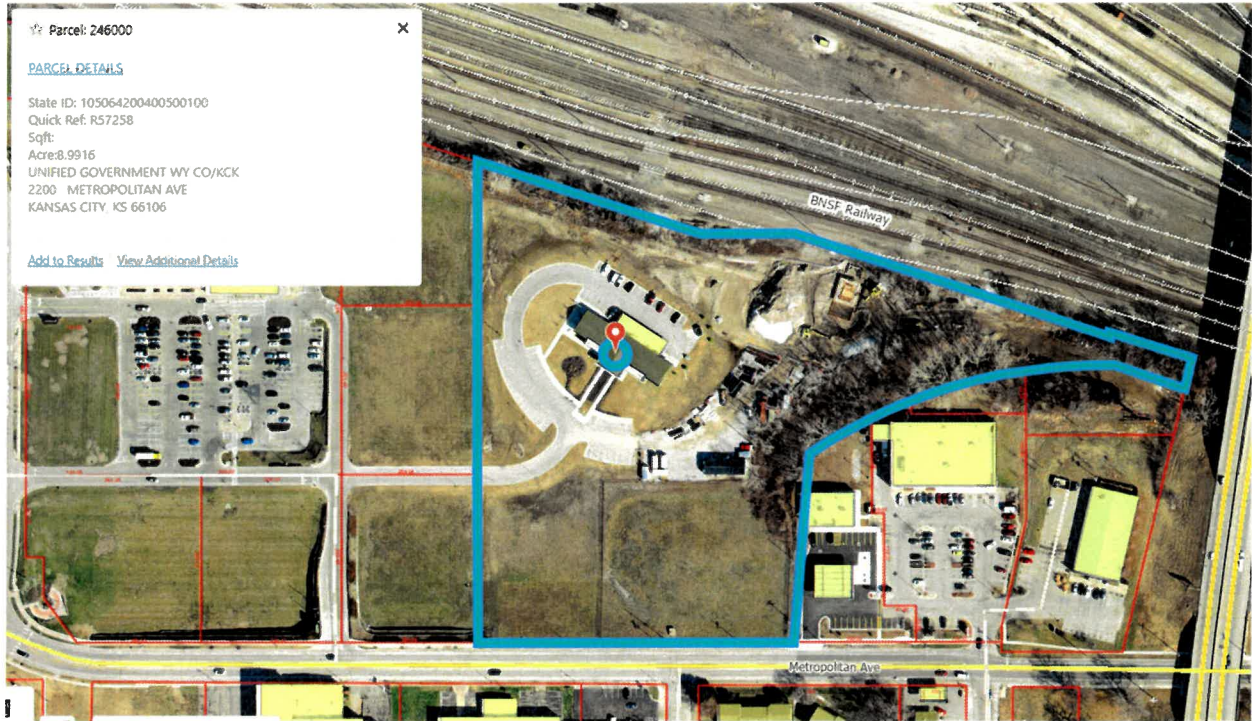


ANNEX
8200 STATE AVE.

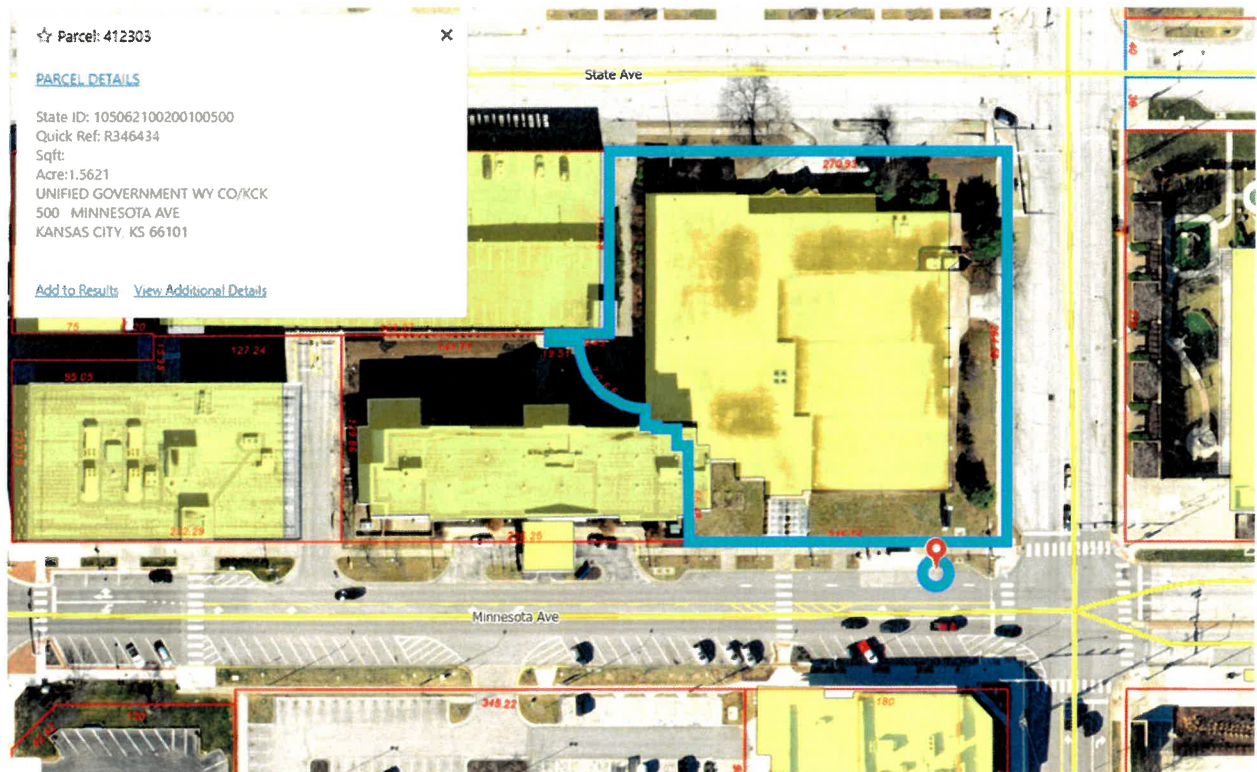


GARLAND PARK (Mow inside the yellow outlined area)

301 ROSWELL AVE.



SOUTH PATROL
2200 METROPOLITAIN AVE.

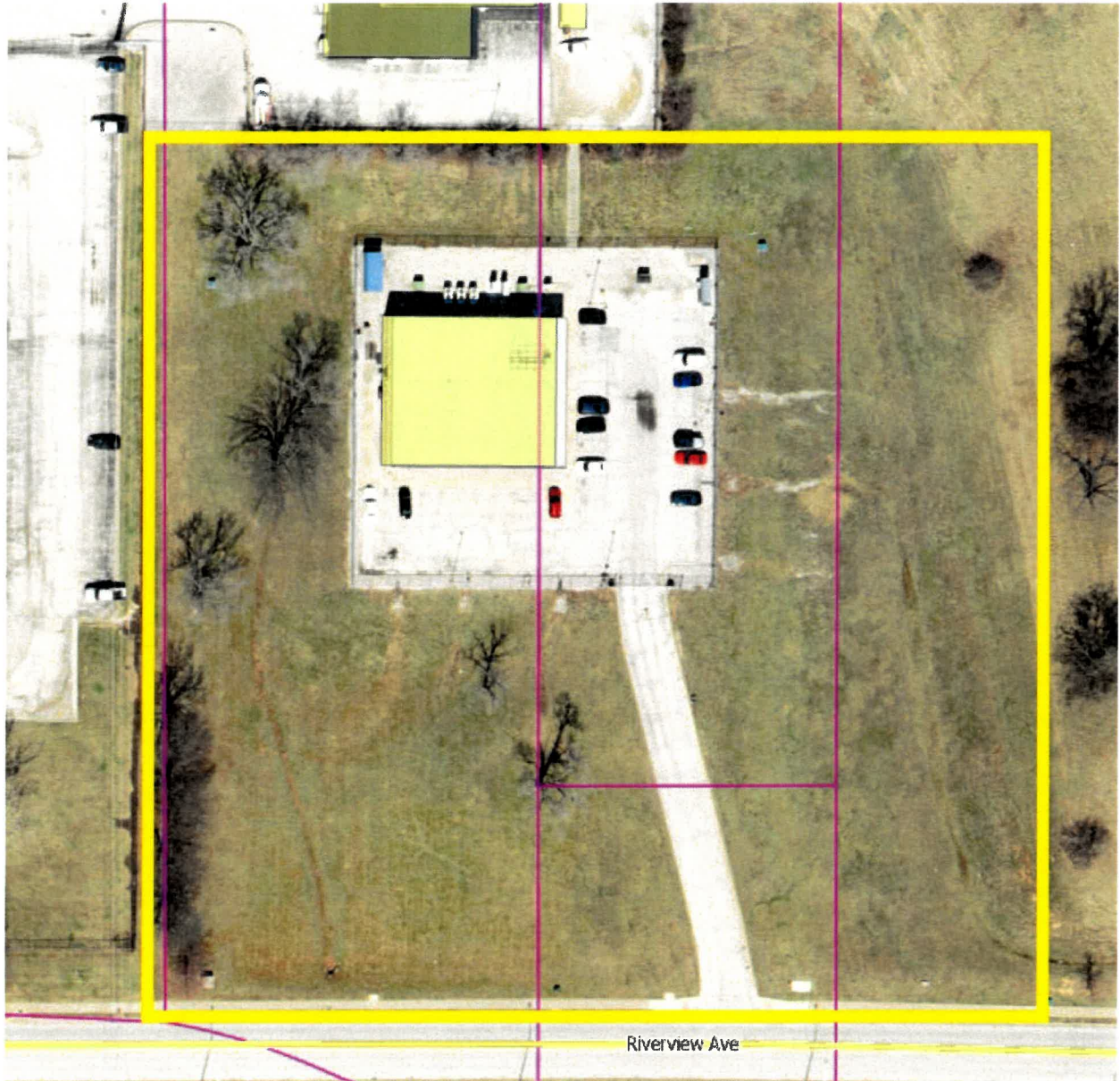


JACK REARDON CENTER
510 MINNESTOA AVE.



OLD SOUTH PATROL

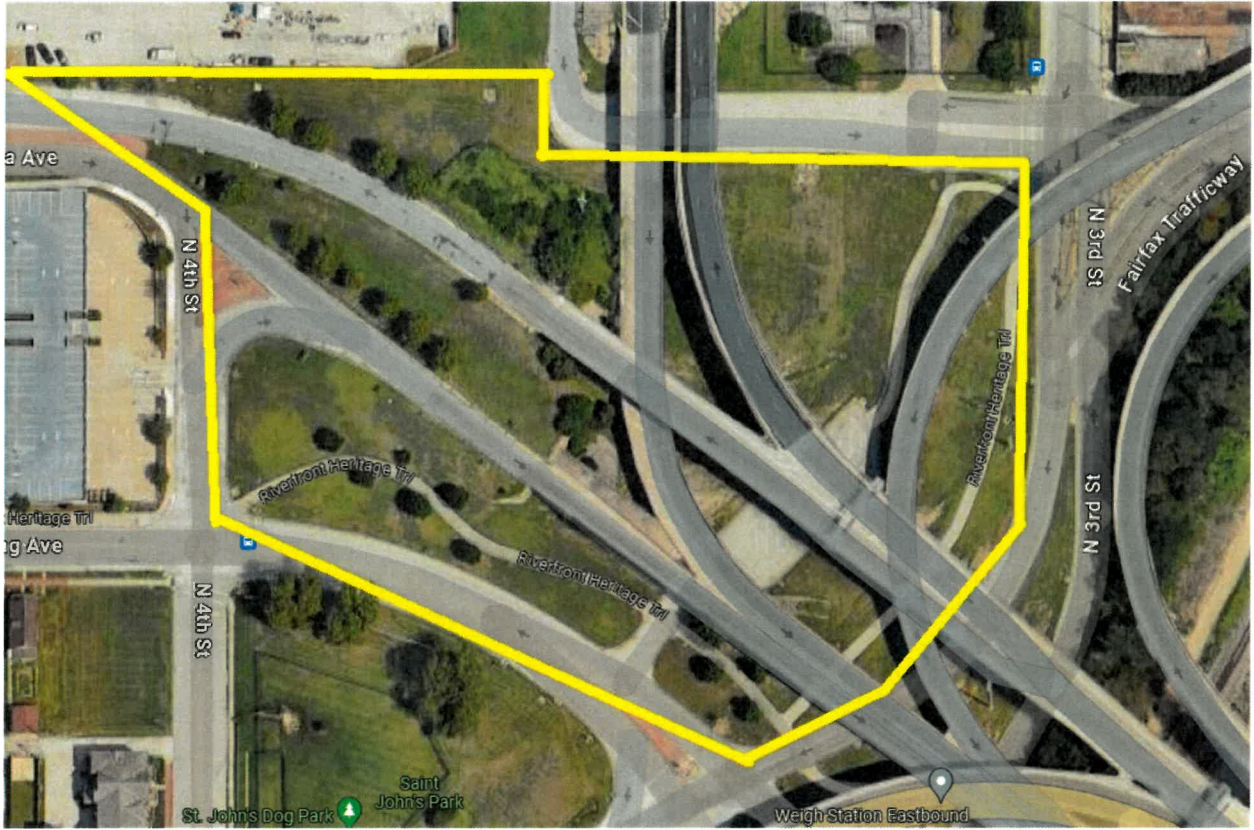
2151 S. 34TH ST.



COMMUNICATION CENTER
6730 RIVERVIEW AVE.



THE MERC COOP
501 MINNESOTA AVE.



RIVERFRONT HERITAGE TRAIL

4TH & ARMSTRONG AVE.

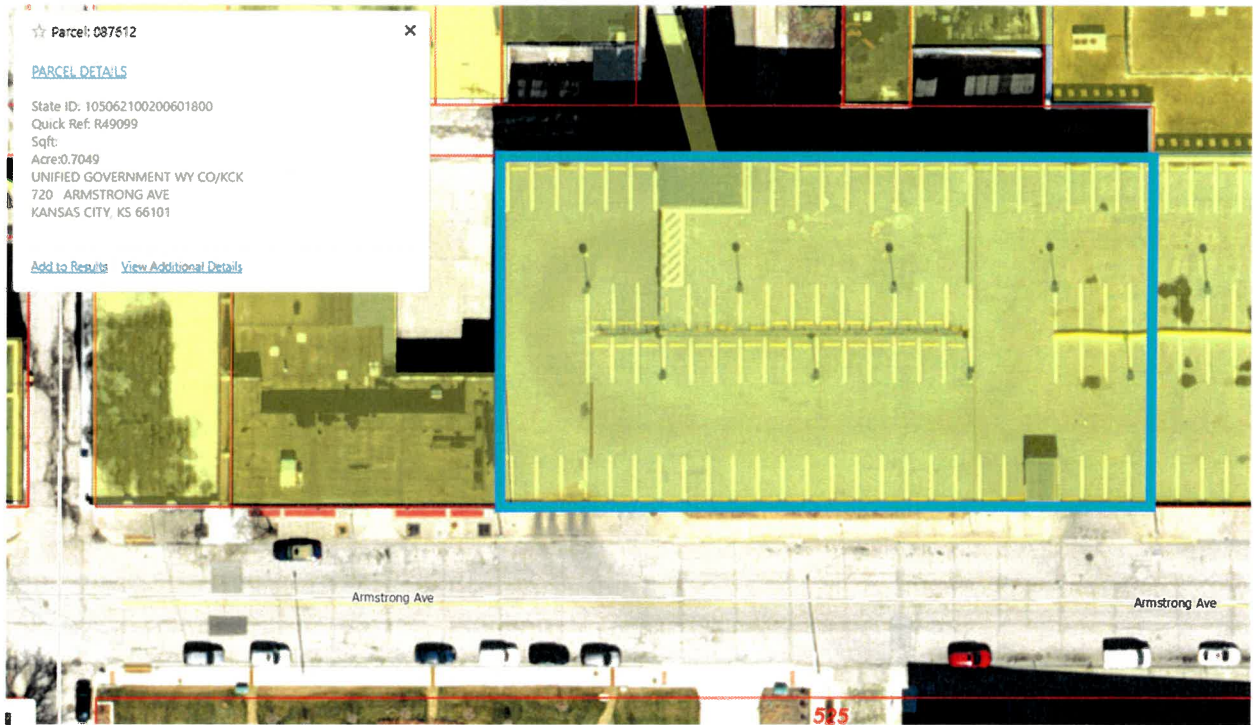
GPS COORDINATES: 39.114985, -94.617284



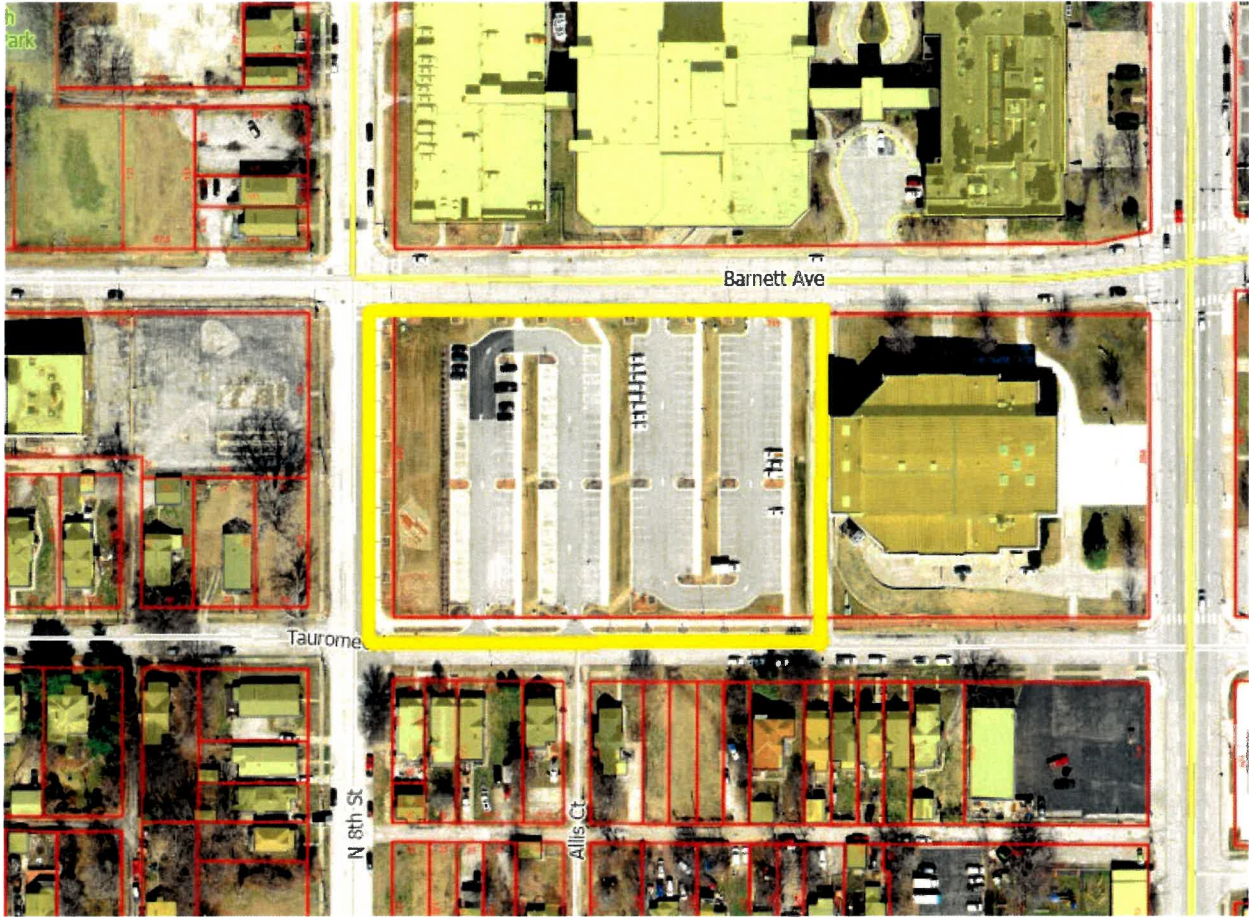
VACANT LOT
801 ANN AVE.



LOT A
732 STATE AVE.



LOT C
720 ARMSTRONG AVE.

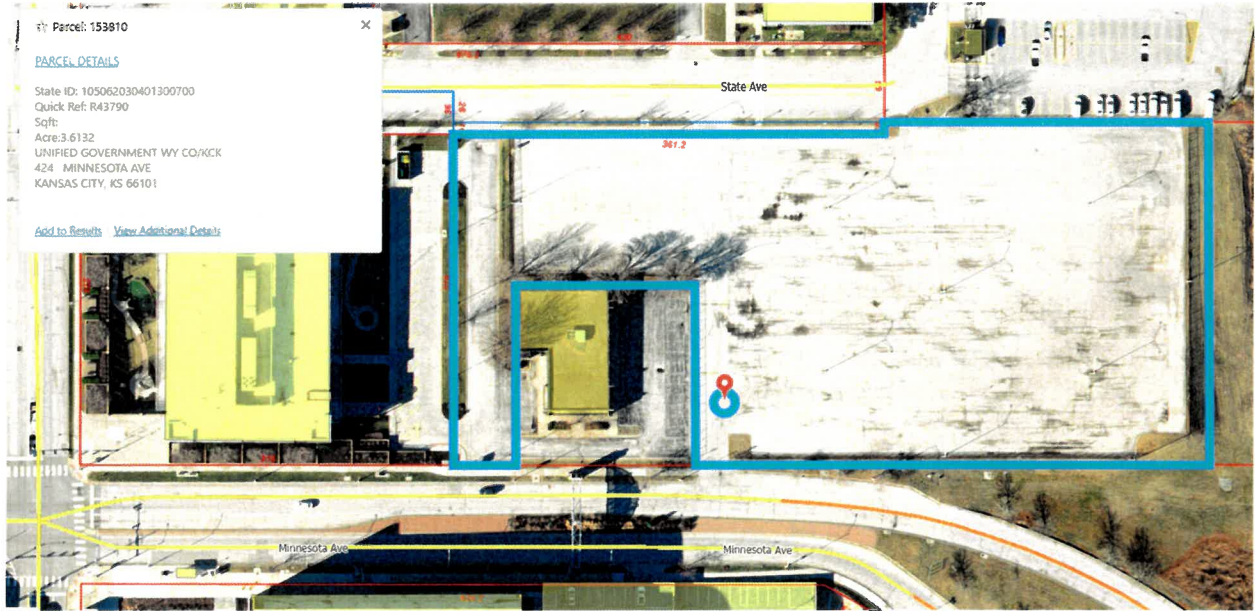


LOT 1 & 2

WEST OF MEMORIAL HALL



LOT 3
621 BARNETT AVE.



LOT 4
424 MINNESOTA AVE.



LOT 5 & 6

N. OF ARMSTRONG BETWEEN 5TH AND 6TH ST.